



**cork**

Un mundo de soluciones  
a tus pies.

Created by Humans,  
Inspired by Nature



## WICANDERS

Wicanders has a legacy that goes back to 1868. It is part of Amorim Cork Flooring, the global leading brand in cork-based flooring, present in more than 80 countries worldwide. Its promise is to provide Floors for Living, ready for real life, for our home and office, for our different rhythms, for our family and pets. For all those wonderful and simple, yet sometimes unexpected moments, thanks to Wicanders durability and **performance**.

Over the years, Wicanders has developed sustainable flooring with exclusive properties due to its cork benefits. By combining state of the art technology with the exclusive natural properties of cork, a higher standard of **comfort** in flooring is achieved. Available with cork, wood and stone looks, its products are able to provide a silent and thermally insulated environment that endures impacts and is very comfortable to walk and stand on.

**Wicanders means  
everyday comfort, lifetime performance.**

---

AMORIM CORK FLOORING

# CORK: Inspired by Nature

Inspired by Nature, Wicanders represents a unique balance between the creation of innovative products and the protection of the environment.

One of cork's most extraordinary properties can be found in its biological origins. In fact, extracting cork does not harm the tree from which it comes from. It is removed every nine years, and not a single tree is cut down in the process.

Cork is the outer bark of the cork oak tree (*Quercus suber* L.), a slowly growing tree from the Mediterranean with a lifespan of around 200 years and plays a central role in the environmental, economic and social development of this region.

With unique properties, cork is 100% natural and fully biodegradable, renewable and recyclable.

## 200 YEARS

The average lifespan of a cork oak tree.

## 100.000

Direct and indirect jobs are created by the cork industry.

## NO TREES ARE DAMAGED

Or cut down.

## 9 YEARS

The period of time between each cork oak harvesting.

## CORK HARVESTING

Is one of the highest paid agricultural job in the world.

## Sustainable by heart

### ENVIRONMENT



**No Trees are damaged or cut down during the harvesting**  
The extraction of cork and its related industries are remarkably sustainable. This is because the tree is never cut down or damaged during the extraction process and the bark regenerates itself after each harvesting.



**Positive ecological impact**  
For each ton of cork produced, the cork oak forest retains up to 73 tons of CO<sub>2</sub>, helping to reduce Global Warming Potential (GWP).

### ECONOMY



**Rural areas economic engine**  
The cork oak forest is essential for the economic development of rural areas in the Mediterranean region, by creating jobs and activities related to the harvesting and treatment of cork. WWF estimates that more than 100,000 people are economically dependent of cork-related business activities.



**One of the highest paid agricultural jobs**  
Cork harvesting is an activity that requires experience and high skills, to prevent damaging the tree during the process. Therefore this activity is one of the highest paid agricultural job in the world.

### SOCIAL



**Crossing generations**  
More than a job, harvesting is a handcraft work that requires a deep knowledge of the forest and the technique. Thus to be able to perform this activity takes several years of training, a know-how that crosses family generations.

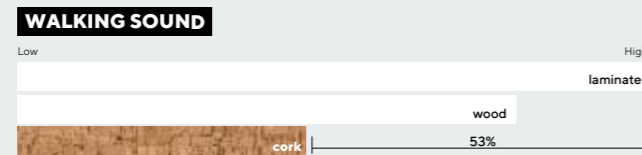


**Prevent rural desertification**  
Cork harvesting is a regular and cyclical process, creating a continuous activity that contributes to settle people in areas at risk of desertification.

# From Nature, to your special space.

Our products are designed to resist under the toughest conditions, always with incredible stability and exceptional **performance**.

Cork offers a world of **comfort** to be discovered by your feet.



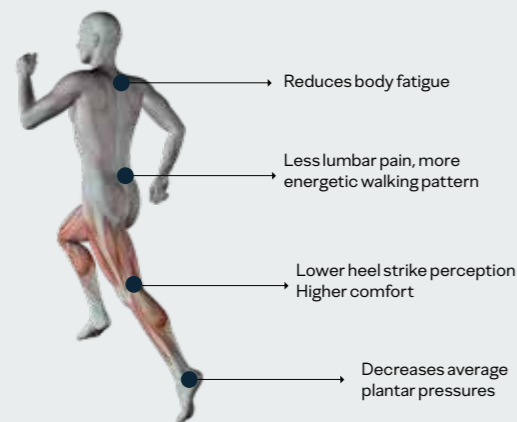
## Silence

Reduces the walking sound up to 53%.



## Impact Resistance

Highest shock absorbing performance.



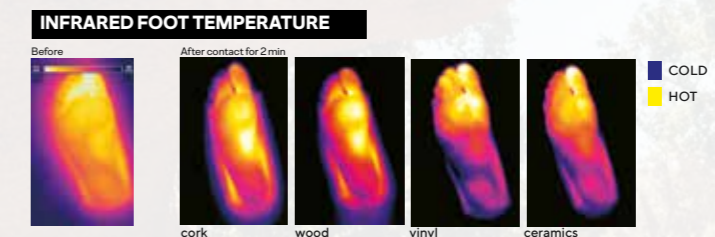
## Walking Comfort

Wicanders cork floors are the perfect mix to reduce heel strike impacts and related body tensions, but stable enough to help the foot impulse and provide the needed stability to reduce effort on walking and decrease body fatigue.



## Indoor Air Quality

Compliance with the strictest indoor air quality standards after being tested on over 2000 potential chemicals.



## Natural Thermal Insulation

Optimal floor temperature all year round.



# cork Essence

Formats 905 x 295 x 10,5 mm  
35 5/8 x 11 5/8 x 3/8"  
1220 x 185 x 10,5 mm  
48 1/32 x 7 9/32 x 13/32"



Floating

Rich in style, charm and sophistication, cork Essence expresses its personality through the unique designs and formats aligned with modern interior design trends. In harmony with nature, each board is unique. The ideal floor for creating ambiances full of charm, combined with the unique comfort of cork and the performance requirements of residential and light commercial applications.



Fashionable Glacier



C85J001

Fashionable Glacier

80001244

905 x 295 x 10,5mm



I801002

Identity Moonlight

80001650

905 x 295 x 10,5mm



P801002

Personality Moonlight

80002260

905 x 295 x 10,5mm



Identity Moonlight



Personality Moonlight



Lane Timide



C83R002

Lane Timide \*

80001224

1220 x 185 x 10,5mm



P802002

Personality Timide

80002262

905 x 295 x 10,5mm



C88N001

Fashionable Jasmim \*

80001289

905 x 295 x 10,5mm



C81O003  
Linn Blush  
80001212  
905 x 295 x 10,5mm



C81N002  
Linn Moon  
80001211  
905 x 295 x 10,5mm



Fashionable Antique White

## When Nature meets charm

In modern interior design, the creation of spaces with style and personality starts with beautiful and expressive floors. Aligned with the market trends, our team of experts has created a unique collection that combines different shapes of natural Cork.

Rich in style, charm and sophistication, and in harmony with nature, this collection also provides a sense of wellbeing that will make more pleasant getting together with friends and family.



I802002  
Identity Timide  
80001651  
905 x 295 x 10,5mm



C85L001  
Fashionable Cement  
80001246  
905 x 295 x 10,5mm



I803002  
Identity Silver  
80001652  
905 x 295 x 10,5mm



C88K001  
Fashionable Antique White \*  
80001288  
905 x 295 x 10,5mm



C88Q001  
Fashionable Antracite \*  
80001292  
905 x 295 x 10,5mm



C85M001  
Fashionable Grafite  
80001247  
905 x 295 x 10,5mm



I810002  
Identity Tea  
80001657  
905 x 295 x 10,5mm



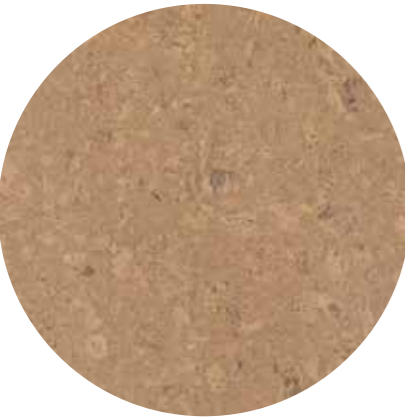
P810002  
Personality Tea  
80002266  
905 x 295 x 10,5mm



C85N001  
Fashionable Macchiato  
80001249  
905 x 295 x 10,5mm



C88P001  
Fashionable Marfim \*  
80001291  
905 x 295 x 10,5mm



P805002  
Personality Champagne  
80002263  
905 x 295 x 10,5mm



I805002  
Identity Champagne  
80001653  
905 x 295 x 10,5mm



O8G2001  
Novel Edge Natural  
80001300  
905 x 295 x 10,5mm



O824003  
Originals Shell  
80002239  
905 x 295 x 10,5mm



O801007  
Originals Natural  
80002234  
905 x 295 x 10,5mm



C84M001  
Traces Tea \*  
80001239  
1220 x 185 x 10,5mm



C84N001  
Traces Spice \*  
80001240  
1220 x 185 x 10,5mm 4



O830003  
Originals Symphony  
80002241  
905 x 295 x 10,5mm



O821005  
Originals Harmony  
80002236  
905 x 295 x 10,5mm



O841002  
Originals Accent  
80002243  
905 x 295 x 10,5mm



Traces Spice



O849003  
Originals Dawn  
80002244  
905 x 295 x 10,5mm



O822002  
Originals Character  
80002238  
905 x 295 x 10,5mm



O83S003  
Lane Chestnut \*  
80001227  
1220 x 185 x 10,5mm 4



C85R002  
Traces Chestnut \*  
80001252  
1220 x 185 x 10,5mm 4



P832002  
**Personality Chestnut**  
80002268  
905 x 295 x 10,5mm



I832002  
**Identity Chestnut**  
80001662  
905 x 295 x 10,5mm



I821002  
**Identity Nightshade \***  
80001660  
905 x 295 x 10,5mm



Identity Chestnut

# Technical solution

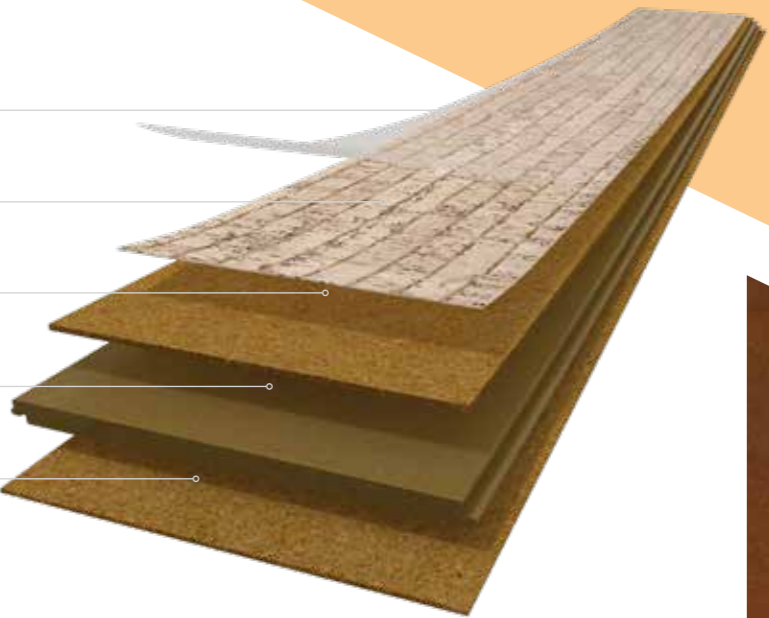
PROTECTIVE SURFACE

GENUINE CORK VENEER

AGGLOMERATED CORK 2,6MM

HDF – HIGH DENSITY FIBERBOARD WITH CORKLOC

INTEGRATED CORK UNDERLAY 0,8MM



# Finishing & Warranty



XtraMatt+ surface is a High Resistance Acrylic UV finish suitable for residential and light commercial areas. It enhances the natural beauty and environmental friendly properties of cork floors, while assuring a high performance for a long time.



Greenguard certification identifies products that have low chemical emissions, improving the indoor air quality. The GOLD certification ensures that a product is acceptable for use in environments such as schools and healthcare facilities.



TÜV-PROFICERT is a transnational certificate for VOC-emissions and air quality, certifying that a product complies with different national regulations, such as AgBB, Belgian VOC regulation, Finnish M1 classification, BREEAM Exemplary Level, LEED v4 (outside North America), RAL-UZ 120 and Austrian Eco Label (Guideline UZ 56).



As of January 2012, France has adopted regulations that limit total VOC emissions of building products. Manufacturers, selling their products in France must obtain a classification ranging from A+ (very low emissions) to C (high emissions). The declared goal is to improve indoor air quality in private/ commercial buildings.



The goal of the German Cork Association is to assure the quality of cork products, as well as the optimization of manufacturing processes and the support of research projects.



CE marking is a certification mark that indicates conformity with health, safety and environmental protection standards for products sold within the European Economic Area (EEA).



Datos técnicos	Norma	Unidad	Valor
Dimensión (LxAnxAl)	-	-	905x295x10,5mm 1220x185x10,5mm
Masa por unidad	-	Kgs / m <sup>2</sup>	7,68
Embalaje (caja/palet)	-	m <sup>2</sup>	2,136 / 111,072 - 905x295x10,5mm 1,806 / 79,464 - 1220x185x-10,5mm
Doméstico	ISO 10874	Classe	23
Comercial	ISO 10874	Classe	31

## PROPIEDADES GENERALES - EN 12104 - EN 20326

Espesor, t -	EN ISO 24346	± 0,25	Conforme
Largo, l	EN ISO 24342	+/- 0.5%	Conforme
Ancho, w	EN ISO 24342	+/- 0.10%	Conforme
Escuadría, q	EN ISO 24342	< 0.2	Conforme
Rectitud, s	EN ISO 24342	≤ 0,30	Conforme
Aberturas, o	ISO 24337	max ≤ 0,20 mm	Conforme
Diferencia de altura, h	ISO 24337	hmax ≤ 0,15 mm	Conforme
Planitud del panel (Largo - cóncavo/convexo)	ISO 24337	cóncavo ≤ 0,50 %, / convexo ≤ 1,0 %	Conforme
Planitud del panel (Ancho - cóncavo/convexo)	ISO 24337	cóncavo ≤ 0,15 %, / convexo ≤ 0,20 %	Conforme
Dimensional Stability	ISO 20326 (Anex C)	≤ 0.25 %	Conforme

## PROPIEDADES DE CLASIFICACIÓN - EN 12104 - EN 20326

Resistencia al desgaste IP	EN 14354 (Anexo D)	≥ 2 500 ciclos	Conforme
Prueba de resistencia a silla con rodillos (Castor Chair)	ISO 4918	25 000 ciclos	Conforme
Prueba de resistencia a patas de silla	Visual	Ningún daño será visible después de la prueba con un pie tipo 2	Conforme
Indentación residual	EN ISO 24343-1	≤ 0,3 mm	Conforme
Dilatación	ISO 24336	≤ 18%	Conforme

## PROPIEDADES DE SEGURIDAD - EN 14041

Resistencia al fuego	EN ISO 11925-2 + EN ISO 9239-1: Class EN 13501-1	Classe	C fl-s1
Clasificación de resistencia a deslizamiento	EN 13893	Classe	DS
Emisión de formaldehído	EN 717-1	Classe	E1
Contenido de pentaclorofenol (PCP)	EN 14041 Anexo B	mg/kg	Indetectable

## PROPIEDADES ADICIONALES

Reducción del sonido de impactos	EN ISO 10140	dB (Δ Lw)	16
Sonido de pisadas	IHD-W431	dB %	13,2 51,6
Resistencia térmica (conductividad térmica)	EN ISO 10456	m2-K/W	R≤ 0,150