



**cork**

Un mundo de soluciones  
a tus pies.



Created by Humans,  
Inspired by Nature



## WICANDERS

Wicanders has a legacy that goes back to 1868. It is part of Amorim Cork Flooring, the global leading brand in cork-based flooring, present in more than 80 countries worldwide. Its promise is to provide Floors for Living, ready for real life, for our home and office, for our different rhythms, for our family and pets. For all those wonderful and simple, yet sometimes unexpected moments, thanks to Wicanders durability and **performance**.

Over the years, Wicanders has developed sustainable flooring with exclusive properties due to its cork benefits. By combining state of the art technology with the exclusive natural properties of cork, a higher standard of **comfort** in flooring is achieved. Available with cork, wood and stone looks, its products are able to provide a silent and thermally insulated environment that endures impacts and is very comfortable to walk and stand on.

**Wicanders means  
everyday comfort, lifetime performance.**

---

AMORIM CORK FLOORING



# CORK: Inspired by Nature

Inspired by Nature, Wicanders represents a unique balance between the creation of innovative products and the protection of the environment.

One of cork's most extraordinary properties can be found in its biological origins. In fact, extracting cork does not harm the tree from which it comes from. It is removed every nine years, and not a single tree is cut down in the process.

Cork is the outer bark of the cork oak tree (*Quercus suber* L.), a slowly growing tree from the Mediterranean with a lifespan of around 200 years and plays a central role in the environmental, economic and social development of this region.

With unique properties, cork is 100% natural and fully biodegradable, renewable and recyclable.

## 200 YEARS

The average lifespan of a cork oak tree.

## 100.000

Direct and indirect jobs are created by the cork industry.

## NO TREES ARE DAMAGED

Or cut down.

## 9 YEARS

The period of time between each cork oak harvesting.

## CORK HARVESTING

Is one of the highest paid agricultural job in the world.

## Sustainable by heart

### ENVIRONMENT



**No Trees are damaged or cut down during the harvesting**  
The extraction of cork and its related industries are remarkably sustainable. This is because the tree is never cut down or damaged during the extraction process and the bark regenerates itself after each harvesting.



**Positive ecological impact**  
For each ton of cork produced, the cork oak forest retains up to 73 tons of CO<sub>2</sub>, helping to reduce Global Warming Potential (GWP).

### ECONOMY



**Rural areas economic engine**  
The cork oak forest is essential for the economic development of rural areas in the Mediterranean region, by creating jobs and activities related to the harvesting and treatment of cork. WWF estimates that more than 100,000 people are economically dependent of cork-related business activities.



**One of the highest paid agricultural jobs**  
Cork harvesting is an activity that requires experience and high skills, to prevent damaging the tree during the process. Therefore this activity is one of the highest paid agricultural job in the world.

### SOCIAL



**Crossing generations**  
More than a job, harvesting is a handcraft work that requires a deep knowledge of the forest and the technique. Thus to be able to perform this activity takes several years of training, a know-how that crosses family generations.



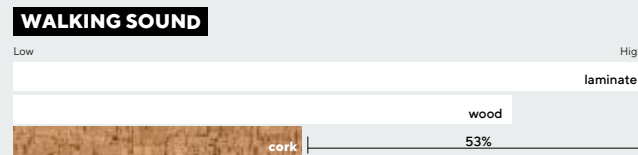
**Prevent rural desertification**  
Cork harvesting is a regular and cyclical process, creating a continuous activity that contributes to settle people in areas at risk of desertification.



# From Nature, to your special space.

Our products are designed to resist under the toughest conditions, always with incredible stability and exceptional **performance**.

Cork offers a world of **comfort** to be discovered by your feet.



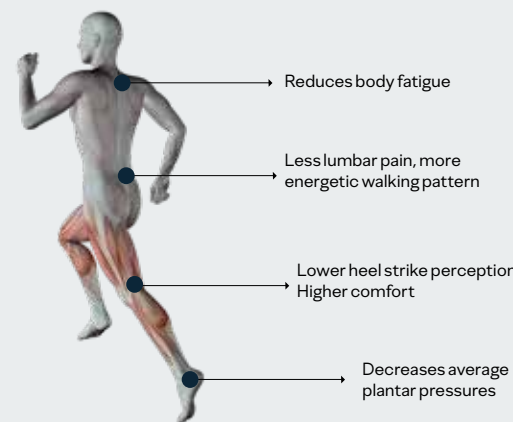
## Silence

Reduces the walking sound up to 53%.



## Impact Resistance

Highest shock absorbing performance.



## Walking Comfort

Wicanders cork floors are the perfect mix to reduce heel strike impacts and related body tensions, but stable enough to help the foot impulse and provide the needed stability to reduce effort on walking and decrease body fatigue.

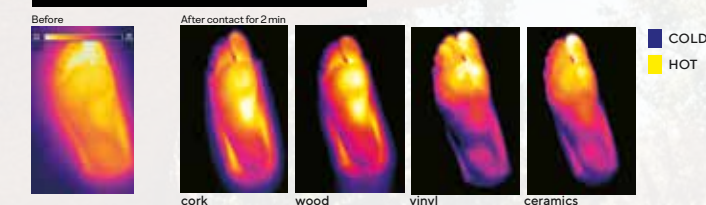


## Indoor Air Quality

Compliance with the strictest indoor air quality standards after being tested on over 2000 potential chemicals.



## INFRARED FOOT TEMPERATURE



## Natural Thermal Insulation

Optimal floor temperature all year round.





# cork Go

Formats 905 x 295 x 10,5 mm  
35 5/8 x 11 5/8 x 3/8"



Developed to be an easy and practical floor with the unique beauty of timeless cork designs that gives a seamless look to the floor. A sustainable product that is ideal for residential use. Cork Go takes advantage of the thermal and accoustical benefits of cork while providing ease of maintenance and outstanding comfort when walking barefoot.



Dream



GB05003  
Dream  
80001642  
905 x 295 x 10,5mm



MF01003  
Earth Tones Grit  
80002131  
905 x 295 x 10,5mm



GB09002  
Impulse  
80001645  
905 x 295 x 10,5mm



C87Y001  
Serenity  
80001286  
905 x 295 x 10,5mm



MF02002  
Earth Tones Sand  
80002133  
905 x 295 x 10,5mm



C87V001  
Affection  
80001283  
905 x 295 x 10,5mm



GB01003  
Charm  
80001636  
905 x 295 x 10,5mm



GB10002  
Appeal  
80001646  
905 x 295 x 10,5mm





NEW

MF03003  
Earth Tones Mud  
80002135  
905 x 295 x 10,5mm



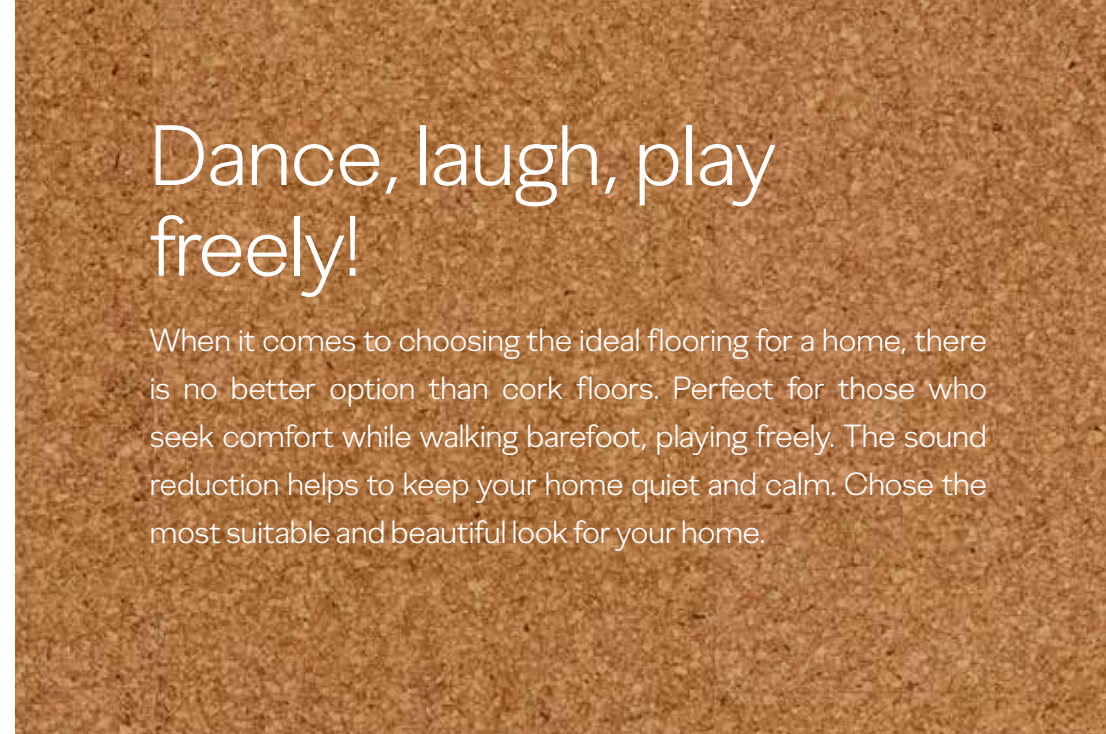
C87X001  
Gloomy  
80001285  
905 x 295 x 10,5mm



C87W001  
Addict  
80001284  
905 x 295 x 10,5mm



GB06002  
Ambition  
80001643  
905 x 295 x 10,5mm



GA01002  
Moment  
80001631  
905 x 295 x 10,5mm



GA21003  
Desire  
80001633  
905 x 295 x 10,5mm



Desire



C824001  
Captivation  
80001219  
905 x 295 x 10,5mm



C8D2001  
Blase  
80001298  
905 x 295 x 10,5mm





C822001  
**Whim**  
80001218  
905 x 295 x 10,5mm



GB03002  
**Attraction**  
80001640  
905 x 295 x 10,5mm



MF05003  
**Earth Tones Argil \***  
80002139  
905 x 295 x 10,5mm



GB02002  
**Allure**  
80001638  
905 x 295 x 10,5mm



MF06002  
**Earth Tones Soil**  
80002141  
905 x 295 x 10,5mm



MF04003  
**Earth Tones Concrete**  
80002137  
905 x 295 x 10,5mm

\* minimum order quantity: 250 m<sup>2</sup>



Earth Tones Argil

## Technical solution

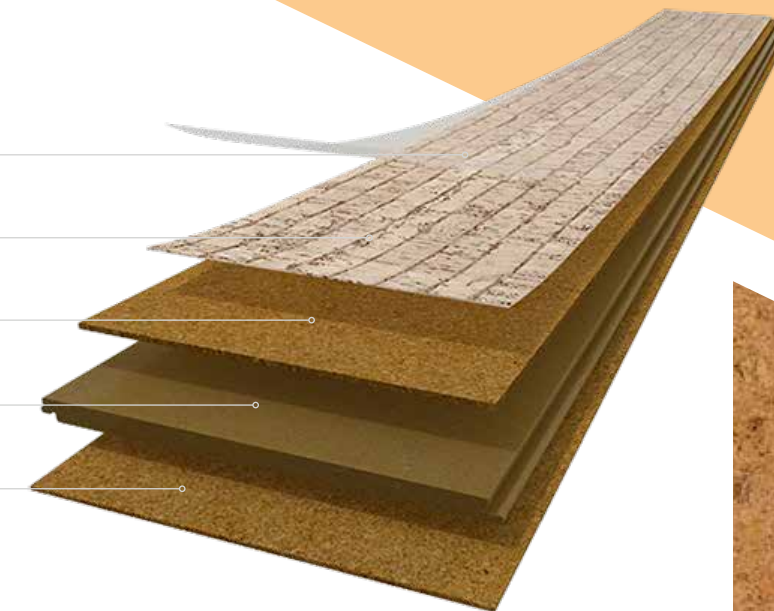
PROTECTIVE SURFACE

GENUINE CORK VENEER

AGGLOMERATED CORK 2,6MM

HDF – HIGH DENSITY FIBERBOARD WITH CORKLOC

INTEGRATED CORK UNDERLAY 0,8MM



## Finishing & Warranty



XtraMatt surface has a unique natural look and feel, combined with the resistance and performance of a UV finish, focused on environmental friendly properties and ease of maintenance.



Greenguard certification identifies products that have low chemical emissions, improving the indoor air quality. The GOLD certification ensures that a product is acceptable for use in environments such as schools and healthcare facilities.



TÜV-PROFICERT is a transnational certificate for VOC-emissions and air quality, certifying that a product complies with different national regulations, such as AgBB, Belgian VOC regulation, Finnish M1 classification, BREEAM Exemplary Level, LEED v4 (outside North America), RAL-UZ 120 and Austrian Eco Label (Guideline UZ 56).



As of January 2012, France has adopted regulations that limit total VOC emissions of building products. Manufacturers, selling their products in France must obtain a classification ranging from A+ (very low emissions) to C (high emissions). The declared goal is to improve indoor air quality in private/ commercial buildings.



The goal of the German Cork Association is to assure the quality of cork products, as well as the optimization of manufacturing processes and the support of research projects.



CE marking is a certification mark that indicates conformity with health, safety and environmental protection standards for products sold within the European Economic Area (EEA).



7 POINTS



8 POINTS

Datos técnicos	Norma	Unidad	Valor
Dimensión (LxAnxAl)	-	-	905x295x10,5mm
Masa por unidad	-	Kgs / m <sup>2</sup>	7,68
Embalaje (caja/palet)	-	m <sup>2</sup>	2,136 / 111,072
Doméstico	ISO 10874	Class	23
Comercial	ISO 10874	Class	-

#### PROPIEDADES GENERALES - EN 12104 - EN 20326

Espesor, t -	EN ISO 24346	± 0,25	Conforme
Largo, l	EN ISO 24342	+/- 0.5%	Conforme
Ancho, w	EN ISO 24342	+/- 0.10%	Conforme
Escuadría, q	EN ISO 24342	< 0.2	Conforme
Rectitud, s	EN ISO 24342	≤ 0,30	Conforme
Aberturas, o	ISO 24337	max ≤ 0,20 mm	Conforme
Diferencia de altura, h	ISO 24337	hmax ≤ 0,15 mm	Conforme
Planitud del panel (Largo - cóncavo/convexo)	ISO 24337	cóncavo ≤ 0,50 %, / convexo ≤ 1,0 %	Conforme
Planitud del panel (Ancho - cóncavo/convexo)	ISO 24337	cóncavo ≤ 0,15 %, / convexo ≤ 0,20 %	Conforme
Estabilidad dimensional	ISO 20326 (Anex C)	≤ 0.25 %	Conforme

#### PROPIEDADES DE CLASIFICACIÓN - EN 12104 - EN 20326

Resistencia al desgaste IP	EN 14354 (Anexo D)	≥ 1 000 ciclos	Conforme
Prueba de resistencia a silla con rodillos (Castor Chair)	ISO 4918	25 000 ciclos	Conforme
Prueba de resistencia a patas de silla	Visual	Ningún daño será visible después de la prueba con un pie tipo 2	Conforme
Indentación residual	EN ISO 24343-1	≤ 0,4 mm	Conforme
Dilatación	ISO 24336	≤ 20%	Conforme

#### PROPIEDADES DE SEGURIDAD - EN 14041

Resistencia al fuego	EN ISO 11925-2 + EN ISO 9239-1: Class EN 13501-1	Class	Dfl-s1
Clasificación de resistencia a deslizamiento	EN 13893	Class	DS
Emisión de formaldehído	EN 717-1	Class	E1
Contenido de pentaclorofenol (PCP)	"EN 14041 Anexo B"	mg/kg	Indetectable

#### PROPIEDADES ADICIONALES

Reducción del sonido de impactos	EN ISO 10140	dB (Δ Lw)	16
Sonido de pisadas	IHD-W431	dB %	13,2 51,6
Resistencia térmica (conductividad térmica)	EN ISO 10456	m <sup>2</sup> ·K/W	R≤ 0,150